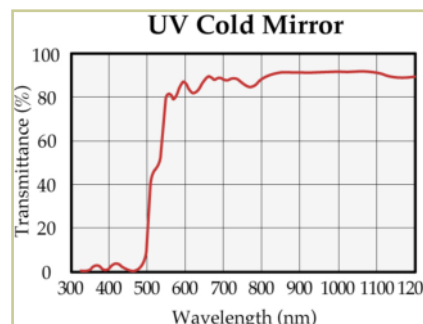
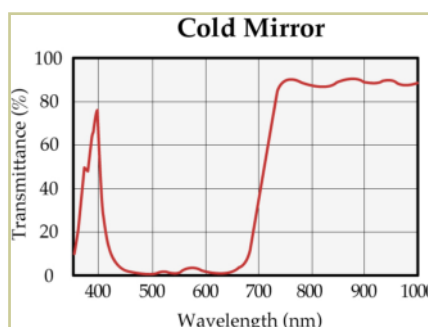
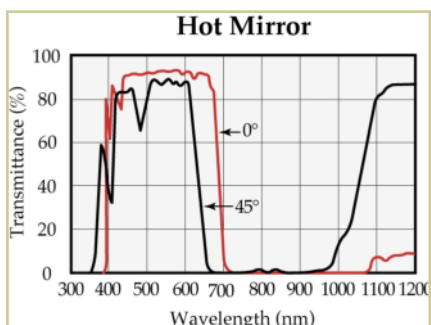
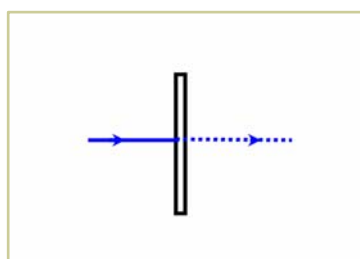
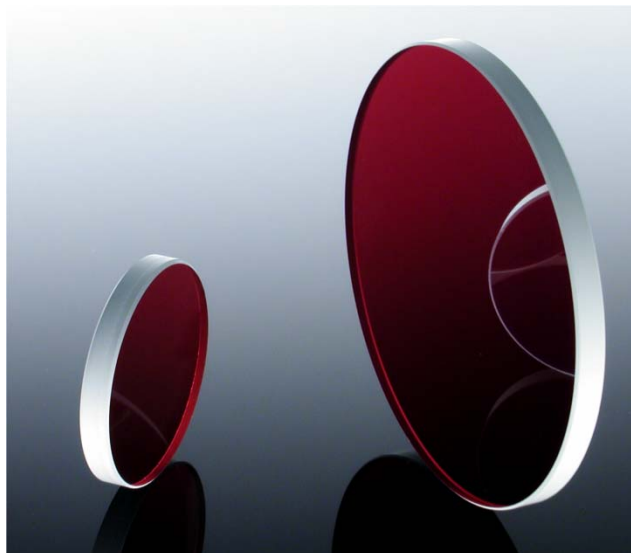


# Hot and Cold Mirrors

Hot and cold mirrors limit the spectral transmittance of an optical system. They operate by means of dichroic reflection of a thin film deposited onto a thin glass substrate. Various types of mirror are available as illustrated by the curves below. It is important to specify whether these are to be used at normal or 45 degree angle of incidence. Standard filters are circular (12.7 or 25.4mm diameter) or square (50.8 x 50.8 mm) in shape. Thickness usually about 3 mm.



## Typical Specifications

Material:	B270
Diameter:	+/- 0.2 mm
Thickness:	3 +/- 0.2 mm
Surface quality:	60/40
Clear aperture:	> 85% of diameter

**To request a quote or to order, please specify:**

Quantity — Type (Hot, Cold or UV Cold) — Angle of Incidence (0 or 45 deg) — Dimensions

**Optarius**

PO Box 2271  
Malmesbury SN16 9FA  
United Kingdom

## Optical Filters

Phone: +44 1666 575185  
Fax: +44 1666 577424  
Email: [optarius@optarius.com](mailto:optarius@optarius.com)  
Web: [www.optarius.com](http://www.optarius.com)

For a quotation — please phone, fax or email us with details of your requirements.