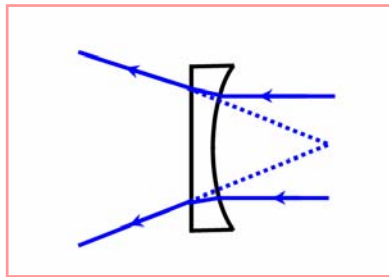


Cylindrical Plano-concave Lenses

Cylindrical plano-concave lenses are used to introduce uni-axial negative power into an optical system.

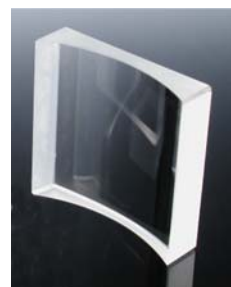


These precision plano-concave cylindrical lenses are made from either BK7 or Fused Silica.

They are supplied either uncoated or with a single layer anti-reflection coating suitable for the ultra-violet (200-350 nm), the visible (350 - 600 nm) or the near infra-red (600 - 1200 nm).

They are supplied either uncoated or with a single layer anti-reflection coating suitable for the ultra-violet (200-350 nm), the visible (350 - 600 nm) or the near infra-red (600 - 1200 nm).

Typical Specifications	
Material:	BK7A, UVFS
Diameter:	+0.0 / -0.2 mm
Centre Thickness:	+ 0.25 mm
Radius of Curvature:	.+ 1%
Centration:	< 3 arcmin
Surface accuracy:	$\lambda/4$ @ 633 nm
Surface quality:	40/20
Clear aperture:	> 85% of diameter



A wide range of focal lengths and sizes are available. The lenses may be circular or rectangular in shape.

Here is a list of the most common sizes (in mm):

<u>Circular Diameter</u> or <u>Square Side</u>	<u>Radius of Curvature</u>
12.7	25, 50, 75, 100
25.4	50, 75, 100, 150
50.8	150, 200, 250, 500

Please ask for other sizes and focal lengths as we can supply a wide selection of these lenses.

To request a quote or to order, please specify:

Quantity — Material — Shape & Size — Radius of Curvature — Coating (Uncoated-UV-VIS-NIR)

Optarius

PO Box 2271
Malmesbury SN16 9FA
United Kingdom

Optics for Imaging

Phone: +44 1666 575185
Fax: +44 1666 577424
Email: optarius@optarius.com
Web: www.optarius.com

For a quotation — please phone, fax or email us with details of your requirements.